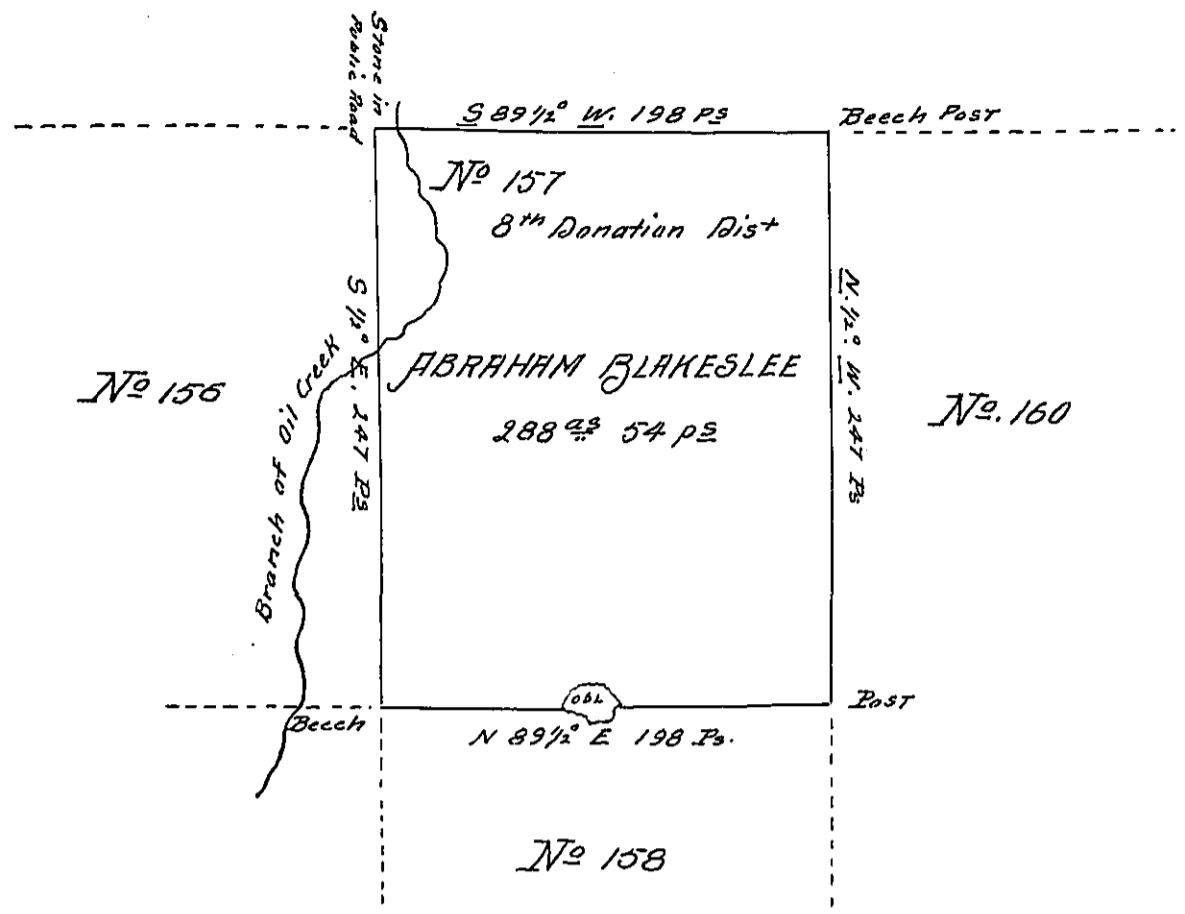


DISTRICT LINE



In pursuance of the settlement of Abraham Blakeslee, there was surveyed on the 11th day of March 1846, Two hundred and eighty eight acres and fifty four perches of land and allowance of six per cent for roads &c., in Sparta Township, Crawford County and Bounded on the North by the District line, on the East by tract No 160; on the South by tract No 158; and on the West by tract No 156.

F. F. A. Wilson Dep. Sur. of
Crawford County, Penn.^a

John Laporte Sur. Gen.

I do hereby certify that it does not appear from the Books and documents in my office that the above described tract has been appropriated by warrant or otherwise.

F. F. A. Wilson Dep. Sur.

IN TESTIMONY that the above is a copy of the original remaining on file in the Department of Internal Affairs of Pennsylvania, made conformably to an Act of Assembly approved the 16th day of February, 1833, I have hereunto set my Hand and caused the Seal of said Department to be affixed at Harrisburg, this fourteenth day of March 1904

Joseph D. Burson
Secretary of Internal Affairs.